

# WheatonArts Pond

Water is essential for all living things!

*This pond was created in the late 1960s when Wheaton Industries removed soil for the construction of a building at a different site. In the process a spring filled the borrow pit with water. Frank Wheaton, Jr., CEO and founder of WheatonArts, is said to have welcomed the new pond.*



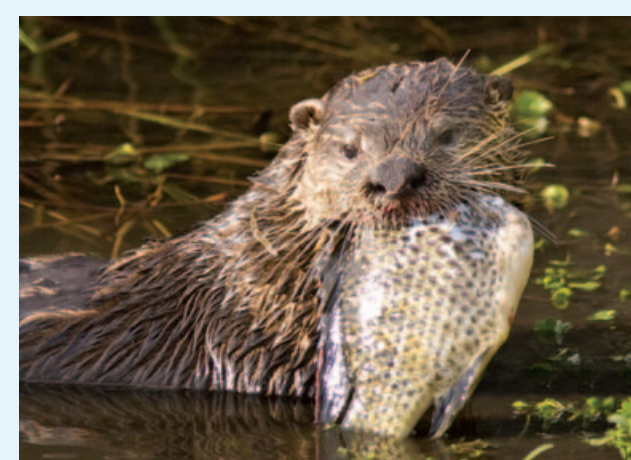
## Vegetated Buffers

Native plantings on shorelines — or *buffers* — are critical to healthy ponds and streams. They offer food, shelter, and hiding places for animals.

Wetland plants can actually change the chemistry of pollutants, reducing excessive nutrients by as much as 80%.

## Pond and Wetland Habitat

Shallow ponds and wetlands are important sources of water for wildlife. Reptiles, amphibians, birds, fish, and insects are reliant on ponds, seasonally or in some cases year-round.



### River Otter

*Lontra canadensis*

Mammals like otter have been seen using the pond.

## Try to spot these turtles:

The redbelly and painted turtle will bask in the sun, while the snapping turtle prefers to float just below the water's surface.



**Redbelly Turtle**  
*Pseudemys rubriventris*



**Eastern Painted Turtle**  
*Chrysemys picta*



**Common Snapping Turtle**  
*Chelydra serpentina*

## Under the Water

Over the years local anglers have stocked the pond with these freshwater game fish:

### Bluegill Sunfish

*Lepomis macrochirus*



- Largest of NJ's sunfish — 6-8 inches
- An introduced species common throughout NJ
- Record size 3 lbs

### Yellow Perch

*Perca flavescens*



- Tolerant of low pH conditions found in Southern NJ
- Native to Nova Scotia south to Georgia and west to Mississippi
- Record size 2 lbs 6 oz

### Largemouth Bass

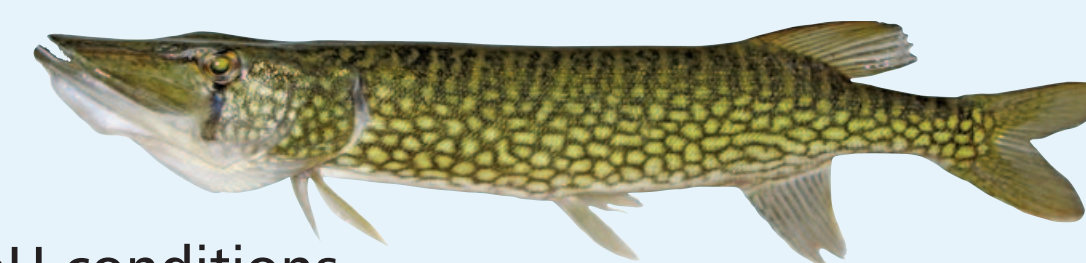
*Micropterus salmoides*



- Most sought-after game species
- An introduced species common throughout NJ
- Native to southeastern US
- Record size 10 lbs 14 oz (caught in Menantico Ponds Wildlife Management Area)

### Chain Pickerel

*Esox niger*

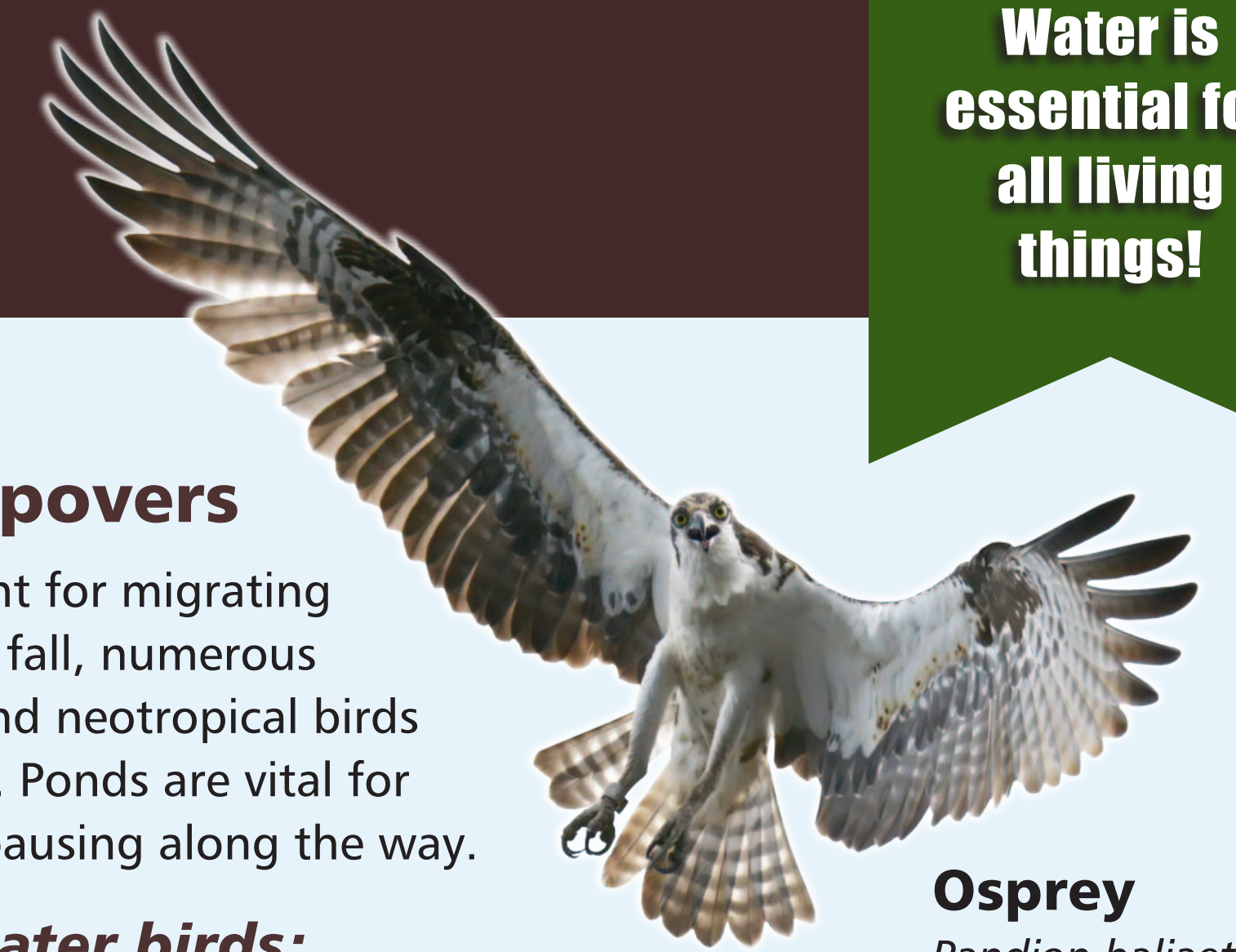


- Native to NJ
- Tolerant of low pH conditions
- Record size 9 lbs 3 oz

*Also present:* Brown Bullhead catfish, Mosquito fish and Pumpkinseed sunfish

## Migration Stopovers

Rest stops are important for migrating birds. Every spring and fall, numerous species of waterfowl and neotropical birds migrate long distances. Ponds are vital for nesting, feeding, and pausing along the way.



### Osprey

*Pandion haliaetus*

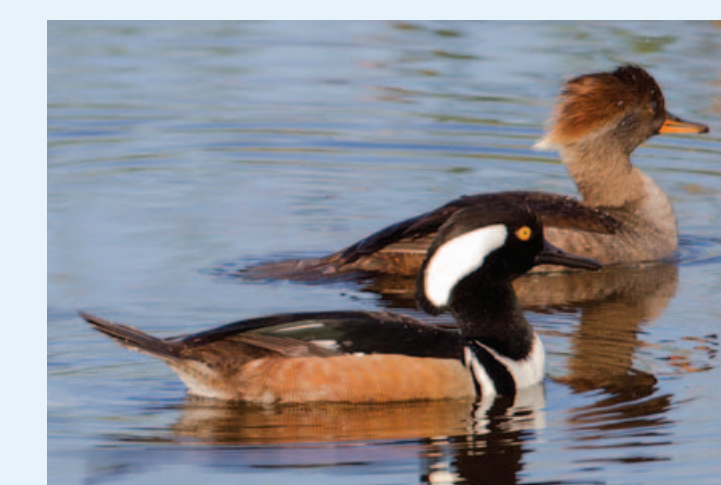
An osprey feeds its fledglings six pounds of fish a day.

## Look for these water birds:



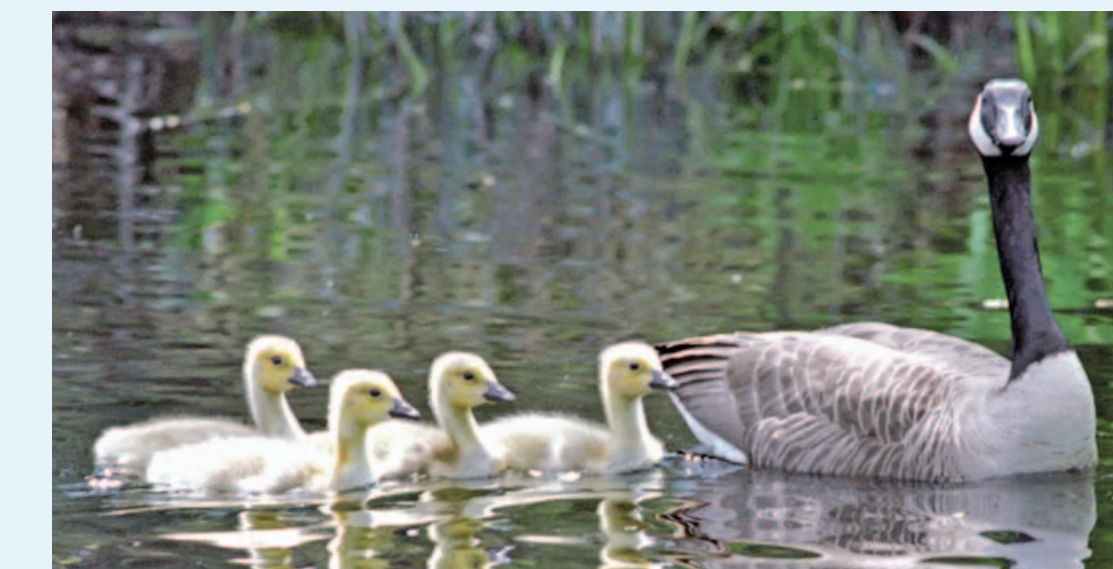
### Wood Duck

*Aix sponsa*



### Hooded Merganser

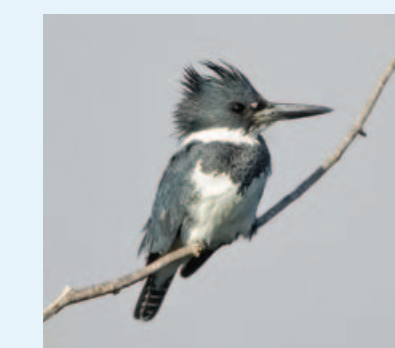
*Lophodytes cucullatus*



### Canada Goose

*Branta canadensis maxima*

Year-round Canada Geese impact water quality and crowd out other wildlife.



### Kingfisher

*Alcedines*



### Great Blue Heron

*Ardea herodias*

You Can Help!

## Protect our waters...

- Plant buffers around waterbodies to intercept pollutants like pesticides, fertilizers, and animal waste. Avoid turf grass, which does not support native wildlife and is high maintenance.
- Plant trees and shrubs to help prevent bank erosion. Suspended sediments harm aquatic animals by depleting oxygen in the water.
- Remove litter and barriers that prevent movement of native wildlife to the water. However, maintain fencing that prevents livestock from accessing ponds and waterways, and use troughs to provide water.
- Properly dispose of pet and animal waste.

CU thanks  
New Jersey Fish  
and Wildlife



Canada Goose photo: J. Lore  
Turtle photos: Robert Zappalorti,  
Nature's Film and Photo Images



Para obtener versión en español, visite:  
[cumauricriver.org/signs/009s.html](http://cumauricriver.org/signs/009s.html)